

HOST  **CALL**

Nurse call system "HostCall-CMP"



ABOUT THE COMPANY

“SKB Telsi” LLC is the owner of the HostCall® trademark and a manufacturer of nurse call systems for nursing homes, hospitals, medical centers, hospices, etc. Our company is a leading supplier of nurse call systems in the Russian market. Every year we sell the systems for more than 20,000 patients in Russia, Asia and Europe. All of our equipment is manufactured in Russia and available in stock.

We offer a 5-year service warranty. Certificates: ISO9001:2015, ISO 13485:2016

MAIN SPECIFICATION OF THE “HostCall—CMP”

The system is available in three modifications that may be deployed either separately or as a single system:

- Two-way voice communication between the nurse and the patients,
- Wired nurse call buttons;
- Wireless nurse call buttons.

All calls are shown on monitors installed in the corridors, at the nurses' stations, on computers, smartphones, and mobile phones of staff.

The HostCALL-Nurse-Stat software collects statistics, including full information on every call and the medical staff response time for the entire hospital/medical facility.

Nurse call buttons come in various designs and with various functions, including waterproof buttons and adapters to integrate the buttons with other medical equipment and sensors. Buttons can be custom designed and feature messages in Braille for people with impaired sight.

We also offer buttons and other equipment for the disabled and elderly including mats with pressure and moisture sensors for use in beds, wheelchairs, on the floor, etc.

“HostCall—CMP” FUNCTIONS

- Calling a nurse.
- Calling a doctor.
- Showing a call at the nurses' station and on other display equipment in the corridor.
- Indicators for staff presence in the ward.
- Voice communication between the nurses' station and the patient.
- Forwarding calls to mobile phones and smart phones.
- Voice communication between the nurses' station and the ward staff.
- Control of speakerphones on the hospital unit doors.
- Extra options for connecting medical equipment and other external systems.



Control panels and displays for on-duty staff



HostCall Nurse

Software HostCall Nurse

HostCall-Nurse software is designed for installation on staff computer running Microsoft Windows operating system at the nurses' station.

Functions:

- Displaying incoming calls from patients,
- Voice communication with patients and medical staff,
- Logging all events,
- Loudspeaker communications and public announcement mode,
- Control of speakerphones and access to the hospital unit,
- Querying the state of up to 32 wards.



HostCall Nurse-Stat

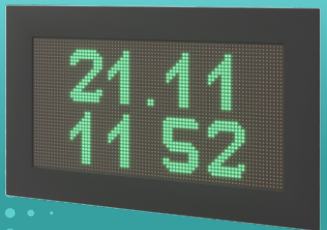
"HostCall Nurse-Stat" software

The software works with any MP-251W4 controllers installed in a hospital and is designed to centrally collect nurse call data.

The data are collected from all the hospital units.

The software logs:

- Date and time of every call,
- Name of the hospital unit,
- Number of the ward,
- Information on the patient who made the call,
- Staff response time for every call.



MP-761WA

Corridor LED display

The LED display may be used as the main (or only) console for displaying call information or as an auxiliary system for displaying calls that are also displayed at the main control panel.

The display may show:

- Current date and time while in stand-by mode,
 - Nurse calls in red, doctor calls in blue,
 - Staff presence in the ward in green.
- Wall mounted.
Dimensions: 400x240x25 mm.



MP-511T1

Nurse handset

The handset is installed at the nurses' station if the system uses an MP-110D1 sensor panel or a computer-based control panel running the HostCall-Nurse software suite.

The handset is connected to the speech path.

Dimensions: 210x105x50 mm.

Corridor lamps

Corridor lamp

Lamps are installed in the corridor above the ward doors and serve to inform the staff on what is going on in the ward.

Connected to an MP-331W1 ward console.

Ward lamp can display the following:

- Nurse call in red,
 - Doctor call in blue,
 - Staff presence in the ward in green.
- Dimensions 82x82x64 mm.



MP-611W1

Wireless controller with an embedded lamp

Controllers are installed outside a ward and designed to receive signals from wireless buttons.

Functions:

Showing calls from MP-412W1, MP-413W1, MP-414W1, and MP-413W wireless buttons,
Transmitting signals and commands to the nurses' station via the RS-485 interface,

Ward lamp can display the following:

- Nurse call in red,
 - Doctor call in blue,
 - Staff presence in the ward in green.
- Dimensions 122x92x72 mm.



MP-211W2

Call buttons



MP-432W2

Wired all buttons

A remote button that is attached to a twisted cord, may be installed on a wall-mounted holder and can be used as a nurse call button by bedridden patients. Connected to an MP-331W1 ward console. Up to 5 call buttons per ward. Sound and light indication to confirm that a call has gone through. May be connected to MP-522W1 communication units. Dimensions: 80x107x34 mm.



MP-412W1

Wireless call buttons

A remote button that is attached to a twisted cord, may be installed on a wall-mounted holder and can be used as a nurse call button by bedridden patients. Connects to an MP-211W1 wireless controller. Up to 5 call buttons per ward. Sound and light indication to confirm that a call has gone through. Distance of up to 20 meters. Dimensions: 80x107x34 mm.



MP-435W2

Waterproof wired pneumatic button

A button with an easy-to-use rubber ball that the patient can squeeze to send a call. Connected to an MP-331W1 ward console. Pneumatic buttons are perfect for use by critically ill patients in medical treatment rooms (treatment baths), etc. Pneumatic buttons come with a cord of up to 2 meter long. IP44 water proofing. Up to 5 call buttons per ward. Up to 2 call buttons per bathroom. Sound and light indication to confirm that a call has gone through. Dimensions: 82x82x18 mm.



MP-433W1

Waterproof call button with a cord

Designed for calling nurses from a bathroom. Connected to an MP-331W1 ward console. Nice ergonomic handle at the end of the cord. IP44 water proofing. The cord is 1.5 meters long. Sound and light indication to confirm that a call has gone through. Dimensions: 82x82x18 mm.



MP-413W1

Waterproof wireless call button with a cord

Designed for calling nurses from a bathroom. Connects to an MP-211W1 wireless controller. Nice ergonomic handle at the end of the cord. IP44 water proofing. The cord is 1.5 meters long. Sound and light indication to confirm that a call has gone through. Distance of up to 20 meters. Dimensions: 82x82x18 mm.

Intercom system



MP-522P1

MP-522W1

Subscriber intercom system

Installed next to a patient's bed and in a bathroom. Can be used for communication between the nurses' stations and the administrative staff of the medical unit as well as a speaker phone at the entrance doors. Connects to an MP-331W1 ward console. An MP-432W1 remote digital call button can also be connected for use by bedridden patients. Wall mounted (vertical or horizontal). Dimensions MP-522W1 165x101x29 mm./ MP-522P1 129x89.5x25 mm.

Doctor presence/reset and call buttons, ward consoles



MP-331W1

Ward console with doctor presence/reset and call buttons

Installed in the ward next to the entrance door and has the following functions:

Status monitoring and indication of: MP-432W1 and MP435W2 call buttons, MP-433W1 bathroom call buttons, MP-522W1 intercom systems, Transmitting signals and commands to the nurses' station via the RS-485 interface, Controlling the light intensity of MP-611W1 corridor lamps. Doctor call, presence and reset buttons are positioned in the center of the front panel. Wall mounted (vertical or horizontal).

Dimensions 165x101x29 mm.



MP-414W1

Doctor presence/reset and call wireless button

Installed inside a ward next to the entrance door.

Functions:

Calling a doctor from the ward,

Indication of staff presence in the ward,

Resetting a call. Wall mounted. Effective distance up to 20 meters.

Dimensions: 82x82x18 mm.

Additional equipment



MP-413D1

Wireless adapter for interfacing with third party systems and equipment.

Designed to allow connection of the ward alarm system to third party devices.

Dry contacts of third party sensors are connected with 3.5 mm stereo jack.

Dimensions: 82x82x18 mm.



MP-431D1

Adapter for interfacing with third party systems and equipment.

Designed to allow connection of the ward alarm system to third party devices.

Dry contacts of third party sensors are connected with 3.5 mm stereo jack.

Dimensions: 82x82x18 mm.



MP-231G1

SMS transmission controller

The controller's function is to notify the staff on patient calls from wards by sending SMS messages to pre-registered phone numbers. Connects to the RS-485 interface.

Supports three types of notifications:

1) nurse calls, 2) doctor calls, 3) emergency calls.

SMS messages can be sent to 10 phone numbers.

Dimensions: 165x101x29 mm.



MP-251W4

Main controller

Transmits information between the ward alarm system of the medical unit and the local area network of the hospital.

Queries ward consoles and other peripherals via the RS-485 protocol and transmits the received data via Ethernet. The main controller uses Ethernet to connect to the nurse computer to display incoming calls, and to the call statistics collection server that collects information from all the units of the hospital.

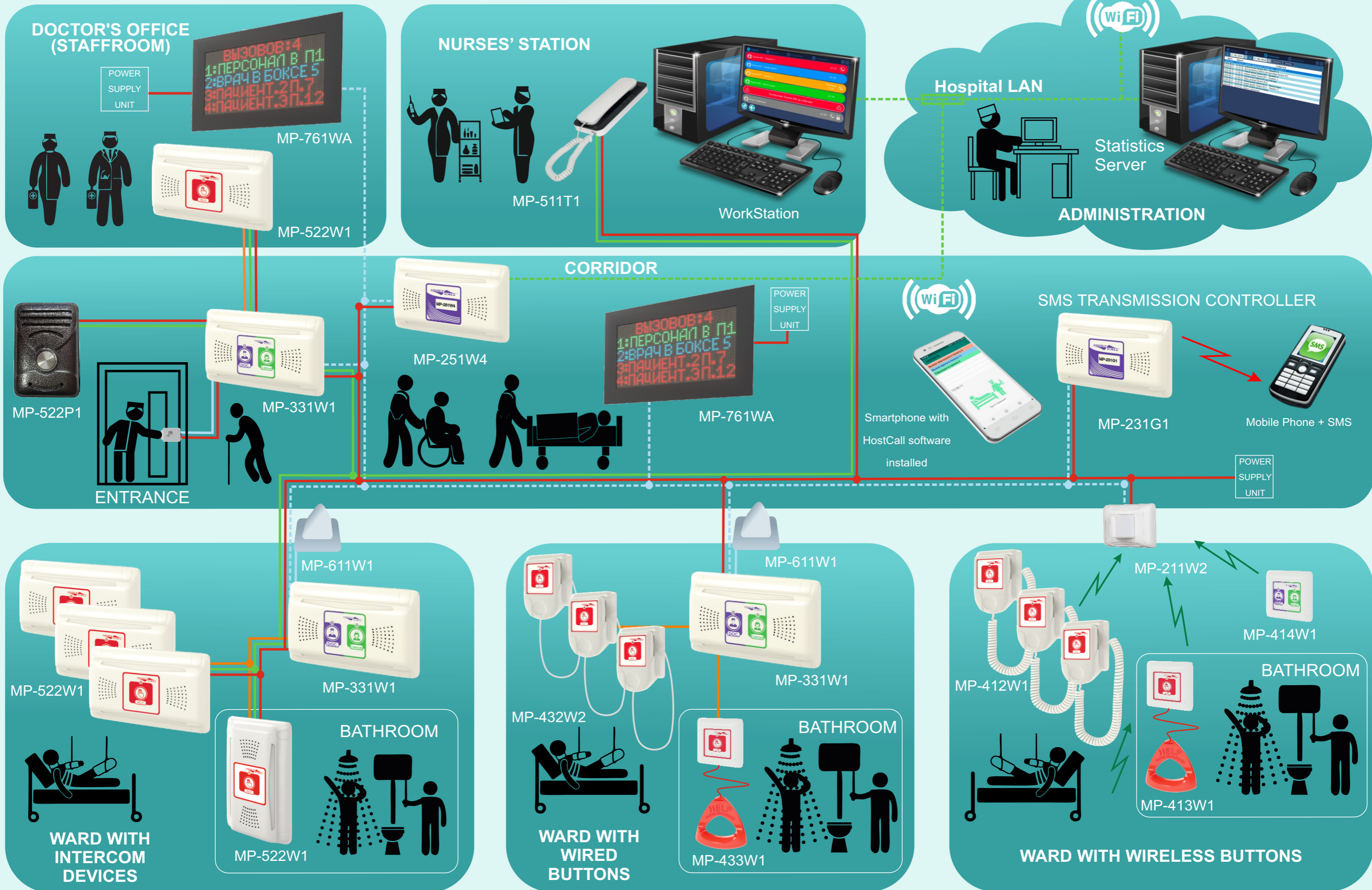
Dimensions 165x101x29 mm.

Cell phones and smartphones

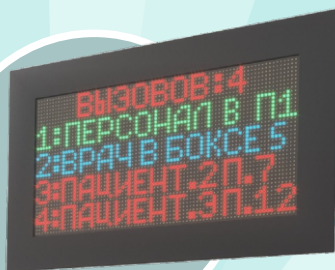
Messages about patient calls from the wards can be sent to regular cell phones and staff smartphones. On smartphones running on Android OS with the HostCall-M program installed, call messages are received via a WI-FI network. Messages are sent to the cell phones of medical workers in the form of SMS messages. In the settings, you can choose which types of calls should be received on the smartphone: standard calls, doctor calls or service messages about malfunctions and failures).



DIAGRAM OF THE HOSTCALL - CMP NURSE CALL SYSTEM



	POWER NETWORK		ANALOGUE SPEECH PATH		CONTROL NETWORK		GSM		RADIO PATH
	SIGNAL NETWORK		RS-485		LAN				



SKB TELSI LTD

25a, bld.1, Varshavskoe shosse,
Moscow, 117105, Russia
+7 (495) 120-48-88
info@hostcall.ru
www.hostcall.ru